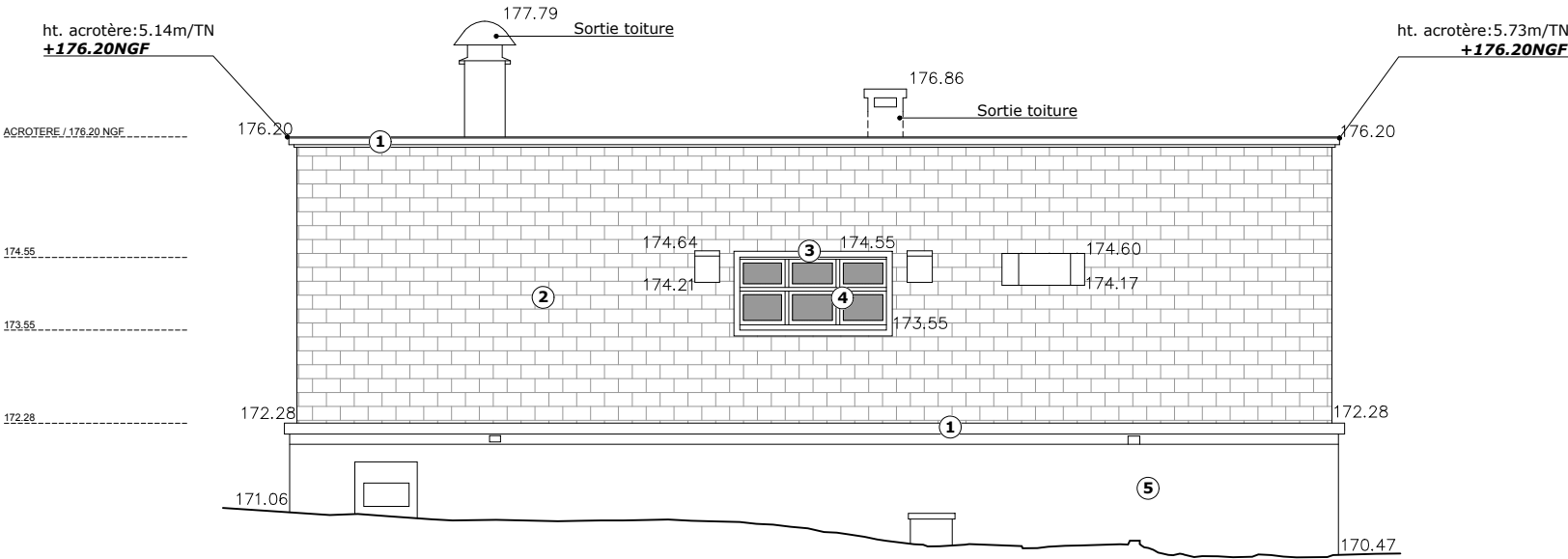
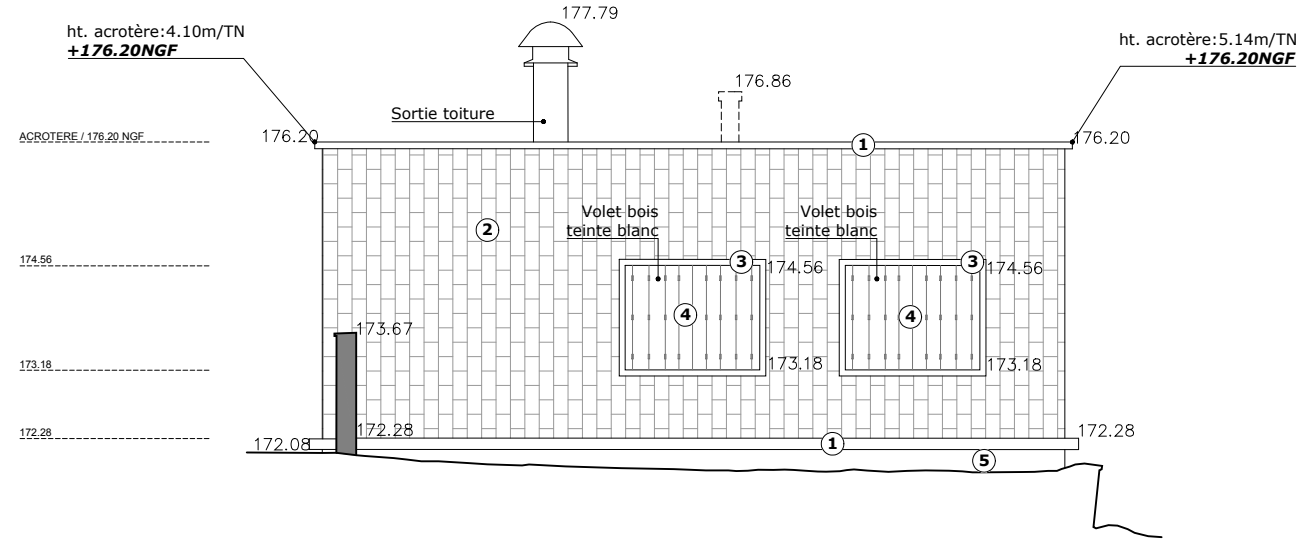


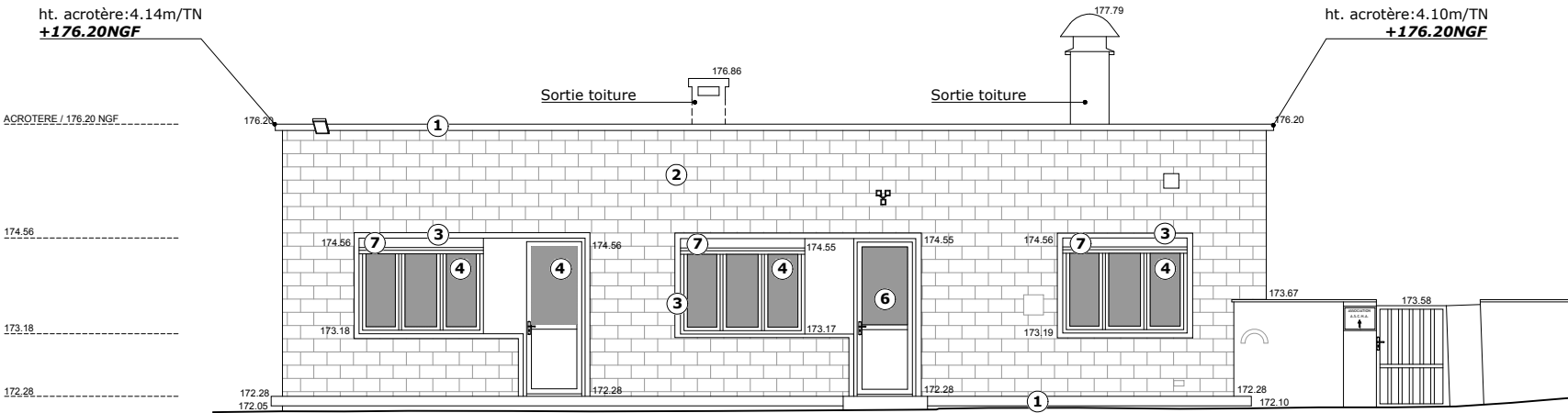
FACADE NORD



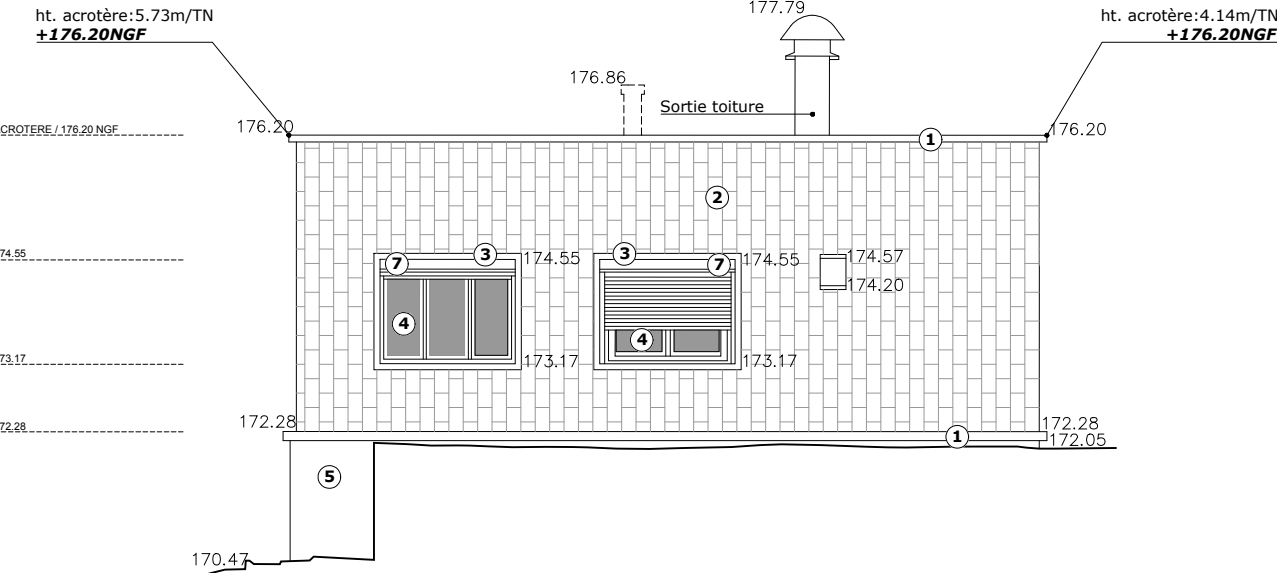
FACADE OUEST



FACADE SUD



FACADE EST



LEGENDE FACADES ETAT-DES-LIEUX	
①	Frise béton brut
②	Parement de façade plaquette de briques teinte terre cuite
③	Encadrement ouverture finition enduit ciment
④	Menuiserie bois peinte teinte blanche
⑤	Soubassement finition enduit ciment
⑥	Menuiserie PVC teinte blanc
⑦	Coffre volet roulant PVC teinte blanc



<div><div><div><div><div></div><div></div></div><div><div></div><div></div></div><div><div></div><div></div></div></div><div><div></div><div></div></div><div><div></div><div></div></div></div><div>MAITRE D'OUVRAGE / <b>CENTRE HOSPITALIER DE ALBI</b> 22Bd Général Sibille - 81000 ALBI</div></div>		<b>INTERNAT ALBI - BATIMENT 17</b>						
<div><div><div><div><div></div><div></div></div><div><div></div><div></div></div><div><div></div><div></div></div></div><div><div></div><div></div></div><div><div></div><div></div></div></div><div>ATELIER <b>4</b></div><div>ARCHITECTE MANDATAIRE / <b>ATELIER D'ARCHITECTURE A4</b> Patrick PINEL - Murielle PIRIOU 59, avenue Crampel - 31400 TOULOUSE tél 05 61 14 95 95 mail contact@ateliera4.fr <b>www.ateliera4.fr</b></div></div>		<div><div><div><div><div></div><div></div></div><div><div></div><div></div></div><div><div></div><div></div></div></div><div><div></div><div></div></div><div><div></div><div></div></div></div><div><b>TPF Ingenierie</b></div><div>78, chemin des Sept Deniers - 31204 TOULOUSE tél 05 61 57 18 72</div></div>		<div>PLAN/ <b>BATIMENT 17 - PLAN DE FACADES - EDL</b></div>			<div>BATIMENT / NIVEAU <b>B17</b></div>	
<div>DESSIN PAR/ <b>T.M.</b></div>		<div>DATE / <b>MARS 2024</b></div>		<div>ECHELLE / <b>1/100</b></div>	<div>PHASE / <b>PC</b></div>	<div>NUMERO PLAN / <b>PC5.8</b></div>	<div>INDICE / <b>0</b></div>	